

Scan one of the contacts below to get in touch with a member of our Cutting Tools team!



Ethan Webb



Gary Gorscak



Keith Hicks



Chris Dorman



Slavo Birka



DISC & DRUM ASSEMBLIES

Heavy Duty Disc and Drum Assemblies designed and manufactured to meet your product specifications.

DISC ASSEMBLIES



Tip-to-Tip Dia.: 36" – 60"
Pilot & Bolt Pattern options to match your driveshaft requirements Steel & Carbide Cutting Tool Options

DRUM ASSEMBLIES



Length: 30" – 88"
Tip-to-Tip Dia.: 14" – 26"
Stub Shaft & Bearing Assemblies to match your requirements Steel & Carbide Cutting Tool Options

HOLDERS / SLEEVES

HOLDERS to match all your Drum and Disc requirements.

QMX10113



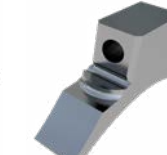
QH10127B



QMX10111



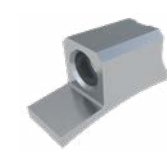
QMX10441



Q10675



QMX10060B



QH10197
QH10198

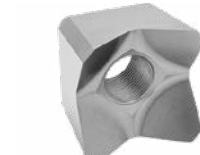


Q10286C2



CUTTING TOOLS

Q10233T



Descr.: Beaver
Kerf: 2 5/16"
Bolt Dia.: 1"
Weight: 1.42 lbs

QH10103T



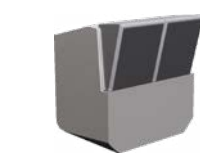
Descr.: Beaver
Kerf: 2"
Bolt Dia.: 3/4"
Weight: 0.86 lbs

QMX10010T



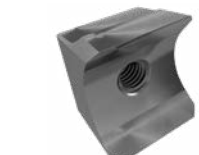
Descr.: Flare
Kerf: 2 1/4"
Bolt Dia.: 3/4"
Weight: 0.79 lbs

QMX10130X



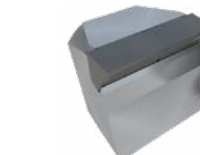
Descr.: Carbide
Kerf: 2"
Bolt Dia.: 3/4"
Weight: 1.46 lbs

QMX10186CT



Descr.: Steel Planer
Kerf: 2"
Bolt Dia.: 3/4"
Weight: 0.98 lbs

QMX10330X



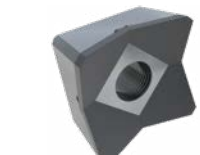
Descr.: Carbide Planer
Kerf: 2"
Bolt Dia.: 3/4"
Weight: 1.36 lbs

Q11246KT



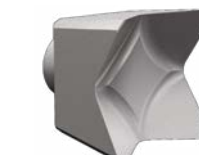
Descr.: Steel Planer
Kerf: 3"
Bolt Dia.: M20
Weight: 2.56 lbs

QMX10035X



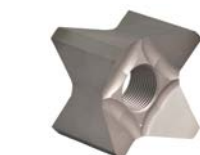
Descr.: Carbide Beaver
Kerf: 1 7/8"
Bolt Dia.: 3/4"
Weight: 0.76 lb

QMX10020T



Descr.: Steel
Kerf: 1 1/8"
Bolt Dia.: 3/8"
Weight: 0.20 lbs

Q10639T



Descr.: Steel Beaver
Kerf: 2 5/16"
Bolt Dia.: 1"
Weight: 1.45 lbs

QMX10435T



Descr.: 4-in-Planer
Kerf: 2 1/2"
Bolt Dia.: 1"
Weight: 2.75 lbs

QMX10140T



Descr.: Steel Tri-Tip
Kerf: 3 1/16"
Bolt Dia.: 1/2"
Weight: 1.36 lbs

BOLTS

SOCKET HEAD BOLT



HEX HEAD BOLT



12-POINT BOLT



NORD-LOCK WASHERS



- P#: ONLW08 1/2"
- P#: ONLW10 5/8"
- P#: ONLW12 3/4"
- P#: ONLW16 1"

QUADCO
CUTTING TOOLS



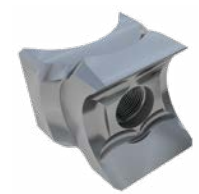
Your Ultimate Source for Forestry Cutting Tools & Attachments

QMX10395X



CARBIDE PLANER

QMX10380T



4-IN-1 PLANER

QMX10420X



CARBIDE HAMMER

Available for Most Popular Mower & Mulcher Brand Models
Carbide & Steel Type Tools

MOWER / MULCHER
CUTTING TOOL GUIDE

FECON® / ASV®

PADDLE STYLE

Q10705T	Q11098ET	Q10985CX-2	Q10985DX-2	Q10560DX
Descr.: Holder Paddle Straight Bolt Size: M24 Bolt P#: 01M24200100109 Nut P#: OHNNL-M24	Descr.: Tooth 2-in-1 Steel Planer Kerf: 2" Holder/Sleeve: Q10705T Shank Dia.: 0.999" Bolt Size: 5/8" NF Bolt P#: 02101836 Sleeve/Nut P#: Q11126-B	Descr.: Tooth 2-Tip Carbide Hammer Kerf: 2 1/4" Holder/Sleeve: Q10705T Shank Dia.: 1" Bolt Size: 5/8" NF Bolt P#: 02101824	Descr.: Tooth 2-Tip Carbide Hammer Kerf: 1 7/8" Holder/Sleeve: Q10705T Shank Dia.: 1" Bolt Size: 5/8" NF Bolt P#: 02101824	Descr.: Tooth 1-Tip Carbide Hammer Kerf: 1 5/8" Holder/Sleeve: Q10705T Shank Dia.: 1" Bolt Size: 5/8" NF Bolt P#: 02101824

PRINOTH / FECON®

QMX10250T
Descr.: Tooth Steel Planer Kerf: 2 1/2" Holder/Sleeve: OEM Bolt Size: M16 Bolt P#: 02M16200040129

RAYCO®

STEEL	CARBIDE
Q10971CT	Q10971X2
Descr.: Tooth Steel Planer Kerf: 2 1/8" Holder/Sleeve: OEM Bolt Size: 5/8" NF Bolt P#: 011018528 and 011018648	Descr.: Tooth 4-Tip Carbide Hammer Kerf: 2" Holder/Sleeve: OEM Bolt Size: 5/8" NF Bolt P#: 011018528 and 011018648

DENIS CIMAF

Q11246KT
Descr.: Tooth Steel Planer Kerf: 3" Holder/Sleeve: OEM Bolt Size: M20 Bolt P#: 01M20150080109 Nut P#: OHN-M20150

NOKAMIC®

Q11239X
Descr.: Tooth 2-Tip Carbide Hammer Kerf: 2 1/4" Holder/Sleeve: OEM Bolt Size: 3/4" NF Bolt P#: 011216488

FAE® / CAT®

1-BOLT	TYPE E
Q10935ET	Q10987X4
Descr.: Tooth 2-in-1 Steel Planer Kerf: 2" Holder/Sleeve: Q10936B Bolt Size: 3/4" NF Bolt P#: 02121652	Descr.: Tooth 4-Tip Carbide Hammer Kerf: 2" Holder/Sleeve: Q10936B Bolt Size: 3/4" NF Bolt P#: 02121648

QMX10320X	Q10936B	Q11236T	Q11262T	TYPE C/3	2-BOLT
				Q11546T	Q11545X
Descr.: Tooth 4-Tip Carbide Planer Kerf: 2" Holder/Sleeve: Q10936B Bolt Size: 3/4" NF Bolt P#: 02121648	Descr.: Adapter/Holder 1-Bolt FAE / CAT	Descr.: Tooth Steel Woodchuck Kerf: 2 1/8" Holder/Sleeve: OEM Shank Dia.: 24.9 mm Bolt Size: M14 Bolt P#: 02M14150030129	Descr.: Tooth Steel Cobra Kerf: 2 1/8" Holder/Sleeve: OEM Shank Dia.: 24.9 mm Bolt Size: M14 Bolt P#: 02M14150030129	Descr.: Tooth Steel Planer Kerf: 2 1/8" Holder/Sleeve: OEM Shank Dia.: 1.2" Bolt Size: 3/4" NF Bolt P#: 011210648	Descr.: Tooth 2-Tip Carbide Planer Kerf: 2" Holder/Sleeve: OEM Shank Dia.: 1.2" Bolt Size: 3/4" NF Bolt P#: 011210648

Q10924BT	Q10975X4B	Q11028-B
Descr.: Tooth 2-in-1 Steel Planer Kerf: 2 1/8" Holder/Sleeve: Q11028-B Bolt Size: 5/8" NF Bolt P#: 02101840	Descr.: Tooth 4-Tip Carbide Hammer Kerf: 1 3/4" Holder/Sleeve: Q11028-B Bolt Size: 5/8" NF Bolt P#: 02101840	Descr.: Adapter/Holder 2-Bolt FAE / CAT

SHINN SYSTEMS

QMX10140T	Q10150T
Descr.: Tooth Steel Tri-Tip Kerf: 3 1/16" Holder/Sleeve: N/A Shank Dia.: 1 1/4" Bolt Size: 1/2" NF Bolt P#: 010820488	Descr.: Tooth Steel 4-Point Kerf: 2 1/4" Holder/Sleeve: N/A Shank Dia.: 1 1/4" Bolt Size: 1/2" NF Bolt P#: 010820488

The Q10150T is not interchangeable with the QMX10140T

ASV® / JOHN DEERE®

Q10924BT	Q10975X4B	Q11187-B
Descr.: Tooth 2-in-1 Steel Planer Kerf: 2 1/8" Holder/Sleeve: See Holder Bolt Size: 5/8" NF Bolt P#: See Adapter/Holder Info	Descr.: Tooth 4-Tip Carbide Hammer Kerf: 1 3/4" Holder/Sleeve: See Holder Bolt Size: 5/8" NF Bolt P#: See Adapter/Holder Info	Descr.: Adapter/Holder ASV Bolt P#: 02101864 and 02101868 QJD10037 Descr.: Adapter/Holder John Deere Bolt P#: 02101856 and 02101868

BOBCAT®

5/8" BOLT	1/2" BOLT
Q10924BT	Q10975X4B
Descr.: Tooth 2-in-1 Steel Planer Kerf: 2 1/8" Holder/Sleeve: Q11125-B Bolt Size: 5/8" NF Bolt P#: See Adapter/Holder Info	Descr.: Tooth 4-Tip Carbide Hammer Kerf: 1 3/4" Holder/Sleeve: Q11125-B Bolt Size: 5/8" NF Bolt P#: See Adapter/Holder Info

QUADCO M32

STEEL	CARBIDE
QMX10435T	QMX10186CT
Descr.: Tooth 4-in-1 Steel Planer Kerf: 2" Holder/Sleeve: QMX10515 Bolt Size: 3/4" NF Bolt P#: 02121648	Descr.: Tooth 2-in-1 Steel Planer Kerf: 2" Holder/Sleeve: QMX10515 Bolt Size: 3/4" NF Bolt P#: 02121648

QUADCO M42 / M52 / M62

STEEL	CARBIDE
QMX10680T	QMX10384T
Descr.: Tooth 4-in-1 Steel Planer Kerf: 2 1/2" Holder/Sleeve: M42: QMX10442 M52/M62: QMX10441 Bolt Size: 1" NF Bolt P#: 011614728 M52/M62: 011614808	Descr.: Tooth 2-in-1 Steel Beaver Kerf: 2 1/2" Holder/Sleeve: M42: QMX10442 M52/M62: QMX10441 Bolt Size: 1" NF Bolt P#: 011614728 M52/M62: 011614808

QUADCO 45 / 56 / BLUE DIAMOND / CEG

QMX10385T	QMX10395X	QMX10420X	STEEL	CARBIDE
			Q11200BT	Q10639T
Descr.: Tooth 2-in-1 Steel Planer Kerf: 2 1/2" Holder/Sleeve: M42: QMX10442 M52/M62: QMX10441 Bolt Size: 1" NF Bolt P#: 011614728 M52/M62: 011614808	Descr.: Tooth Carbide Planer Kerf: 2" Holder/Sleeve: M42: QMX10442 M52/M62: QMX10441 Bolt Size: 1" NF Bolt P#: 011614728 M52/M62: 011614808	Descr.: Tooth 2-Tip Carbide Hammer Kerf: 2" Holder/Sleeve: M42: QMX10442 M52/M62: QMX10441 Bolt Size: 1" NF Bolt P#: 011614728 M52/M62: 011614808	Descr.: Tooth 4-in-1 Steel Planer Kerf: 2" Holder/Sleeve: Q11201CT Bolt Size: 1" NF Bolt P#: 02161472	Descr.: Tooth 4-in-1 Steel Beaver Kerf: 2" Holder/Sleeve: QDM 45/56: Q11500C Spacer: Q10632T Bolt Size: 1" NF Bolt P#: 02161464