

Quadco's 42-inch drum mulcher is the latest addition to a current line up of tough, reliable and productive forestry mulching attachments. It is an extreme duty attachment, best suited to 17-25 ton excavators and feller bunchers. It is available with a variety of Quadco teeth, all-steel or carbide, to suit any application. Built-in universal boom adapter provides equipment dealers, particularly rental fleets, flexibility and versatility, to meet the demands of their client's businesses - pins and sleeves can be swapped to fit different brands of carrier as required.



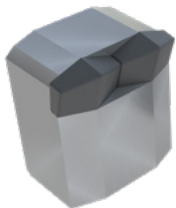
## CONFIGURATION STANDARD

## IMPERIAL

## METRIC

WEIGHT & DIMENSIONS	Excavator size	17-25T	
	Weight (approx.)	3,500 lbs	1,588 kg
	Exterior Frame Length (Without Thumb)	65.25 in	165.7 cm
	Cutting width	43 in	109.2 cm
	Drum Tip-Tip	21.6 in	55 cm
	Teeth type (QTY)	Large kerf (22x) Carbide or Steel	
	Teeth Bite	0.65 in deep x 2.31 kerf	1.65 cm x 5.9 cm
	Drive	Direct 170cc piston type / variable	
	Drum RPM	2,500 rpm	
	Hyd Flow-Suggested (Min/Max)	GPM 55 (40/100)	LPM 208 (150/378)
	Valve	PVG32 w priority tilt	
	Side Tilt (Left/Right)	50°/60°	
	Counter Tooth Anvil - in & out	Yes	

QMX10420X



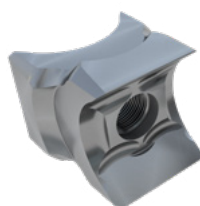
Carbide - Rock  
Extreme Impact  
High Abrasion

QMX10395X



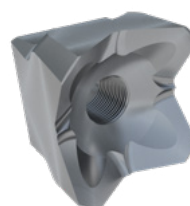
Carbide - Planer  
Reduce material size  
Medium Impact  
High Abrasion

QMX10380T



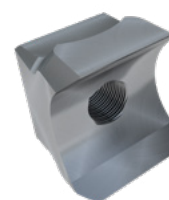
Steel - Planer 4-in-1  
Rotatable & Reversible  
Sharpenable  
Low Abrasion

QMX10384T



Steel - Beaver  
Rotatable  
Viney material  
Low Abrasion

QMX10385T



Steel - Planer  
Rotatable  
Sharpenable  
Low Abrasion

----- Steel Teeth - Highest Productivity -----