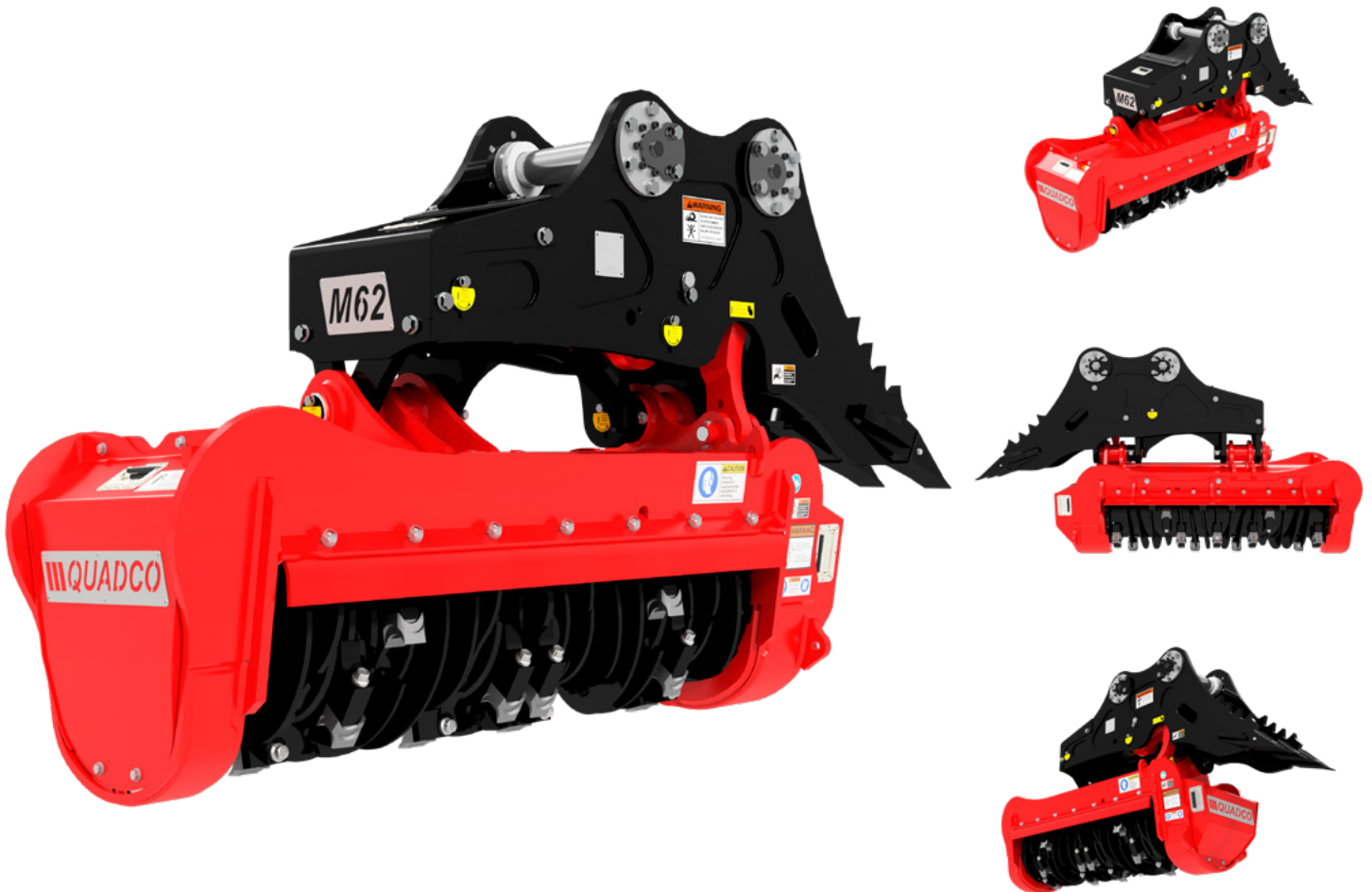


Quadco's 62-inch drum mower is part of our current line up of tough, reliable and productive forestry mulching attachments. It is an extreme duty attachment, best suited to 25-35 ton excavators and feller bunchers. To improve productivity and handling of ground material, a 102-degree lateral tilt is offered as standard equipment as well as a fixed heel equipped with replaceable bucket teeth. The drum has a spiral-shaped bite limiter that also spreads material evenly across the width. It is available with a variety of Quadco teeth, all-steel or carbide, to suit any application. Built-in universal boom adapter provides equipment dealers, particularly rental fleets, flexibility, and quick turn arounds to meet the demands of their client's businesses - pins and sleeves can be swapped when a change of carriers is required.



STANDARD CONFIGURATION

METRIC

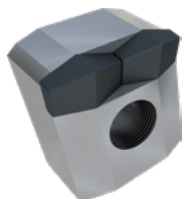
IMPERIAL

WEIGHT & DIMENSIONS	Weight (<i>Incl lateral tilt, heel, typical bolt-on sleeves & pins</i>)	2,495 kg	5,500 lbs
	Overall Height	1,524 mm	60"
	Width	864 mm	34"
	Length (<i>max. length with heel</i>)	2,769 mm	109"
	Lateral Tilt Angle	102° (+52°/-50°)	

DRUM	Cutting Swath	1,575 mm	62"
	Drum Diameter, Tip-to-Tip	610 mm	24"
	Number of Teeth	30	
	Drum Speed	2,200 rpm	

HYDRAULICS	Recommended Carrier Size	25 - 35 ton	
	Variable Displacement Motor	1 x 170 cc & 1 x 110 cc	
	Minimum Flow @ Pressure	322 l/min @ 240 bar	85 gpm @ 3,500 psi
	Optimum Flow @ Pressure	416 l/min @ 240 bar	110 gpm @ 3,500 psi
	Maximum Pressure	340 bar	5,000 psi

QMX10420X



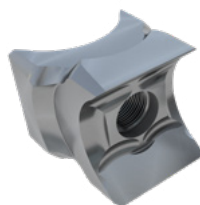
Carbide - Rock
Extreme Impact
High Abrasion

QMX10395X



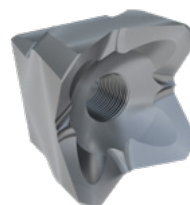
Carbide - Planer
Reduce material size
Medium Impact
High Abrasion

QMX10380T



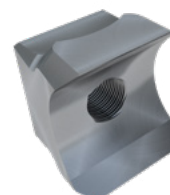
Steel - Planer 4-in-1
Rotatable & Reversible
Sharpenable
Low Abrasion

QMX10384T



Steel - Beaver
Rotatable
Viney material
Low Abrasion

QMX10385T



Steel - Planer
Rotatable
Sharpenable
Low Abrasion