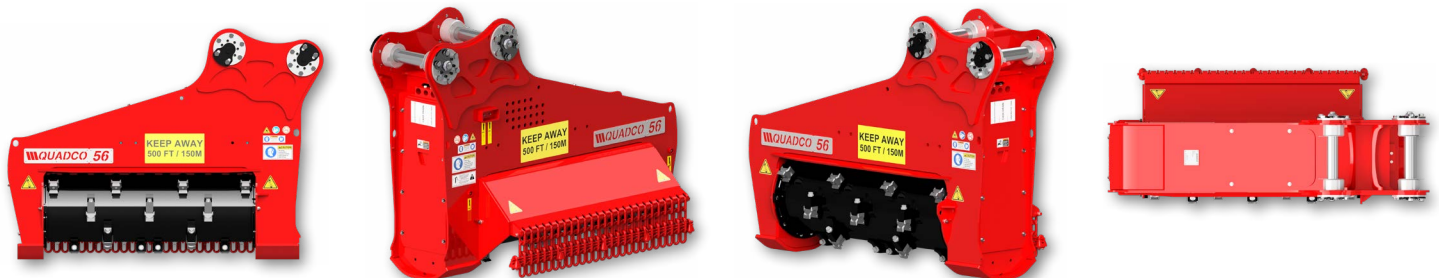
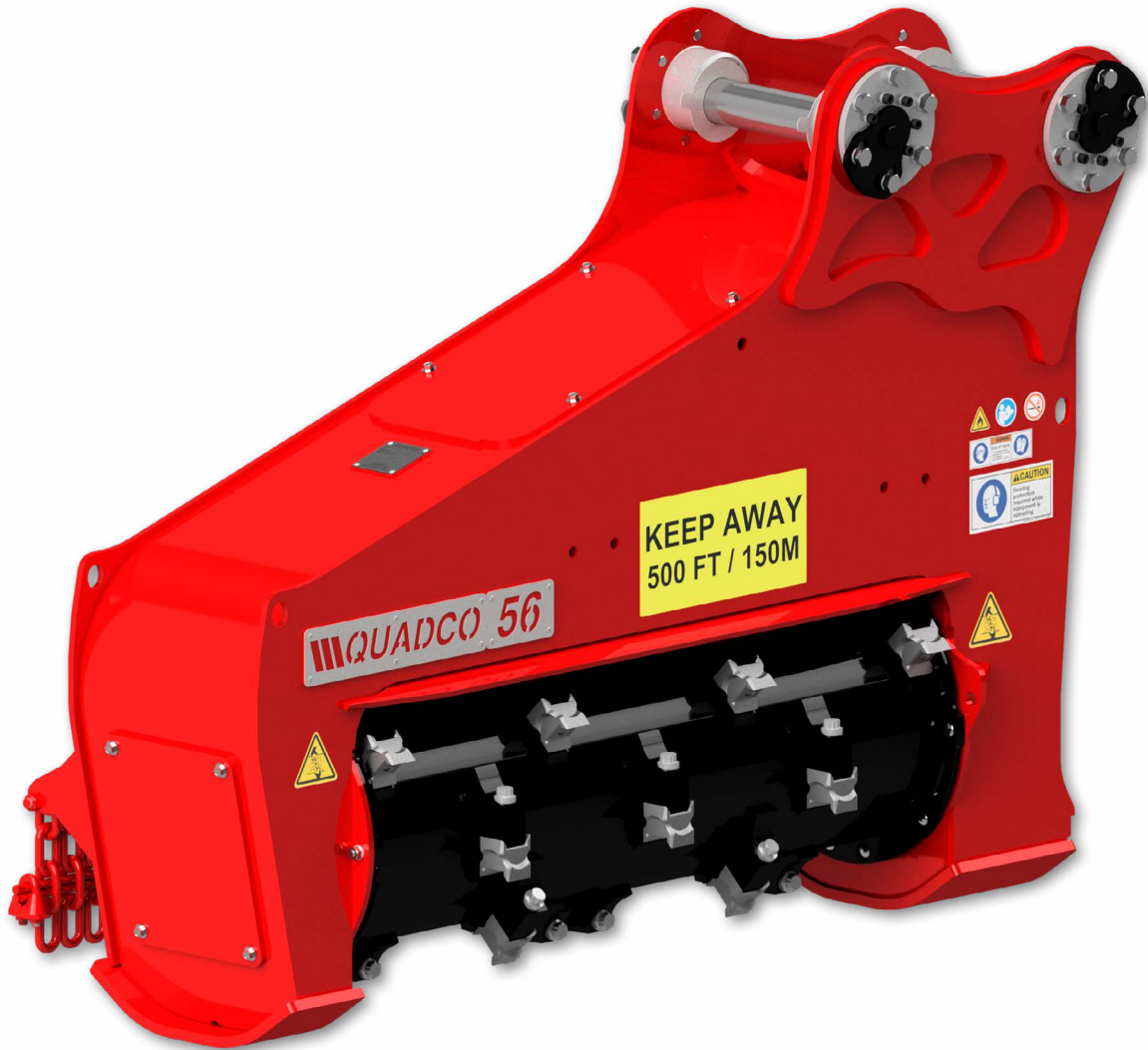


Drum Mower Attachment Heads are extremely heavy-duty drum mowers. When paired with Quadco Mower Teeth, they provide a complete mulching system. They are capable of mulching vegetation into fine material and they have an optional boom adapter with matching pins or quick attach available for most carriers.



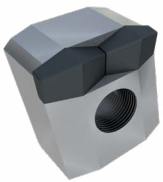
## STANDARD CONFIGURATION

## METRIC

## IMPERIAL

WEIGHTS & DIMS.			
WEIGHTS & DIMS.	Weight ( <i>Excluding Boom Adapter &amp; Pins</i> )	1,488 kg	3,875 lbs
	Height	1,245 mm	49"
	Width	813 mm	32"
	Length	1,803 mm	76"
DRUM			
DRUM	Cutting Swath	1,422 mm	56"
	Number of Teeth	26	
	Belt Drive	2,000 rpm	
HYD.			
HYD.	Motor Size	170 cc	
	Minimum Flow	170 lpm	45 gpm
	Pressure	260 bar	3,771 psi

### QMX10420X



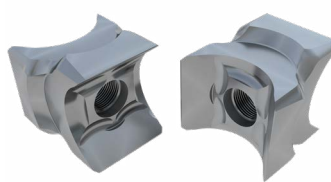
Carbide - Rock  
Extreme Impact  
High Abrasion

### QMX10395X



Carbide - Planer  
Reduce material size  
Medium Impact  
High Abrasion

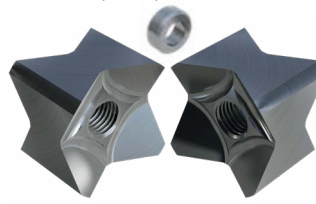
### QMX10380T



Steel - Planer 4-in-1  
Rotatable - Reversible  
Sharpenable  
Low Abrasion

### Q10639T

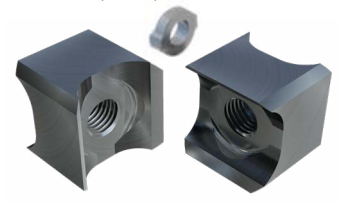
\*Requires Spacer Q10632T



Steel - Beaver  
Rotatable - Reversible  
Viney material  
Low Abrasion

### Q11200BT

\*Requires Spacer Q11201CT



Steel - Woodchuck  
Rotatable - Reversible  
Sharpenable  
Low Abrasion