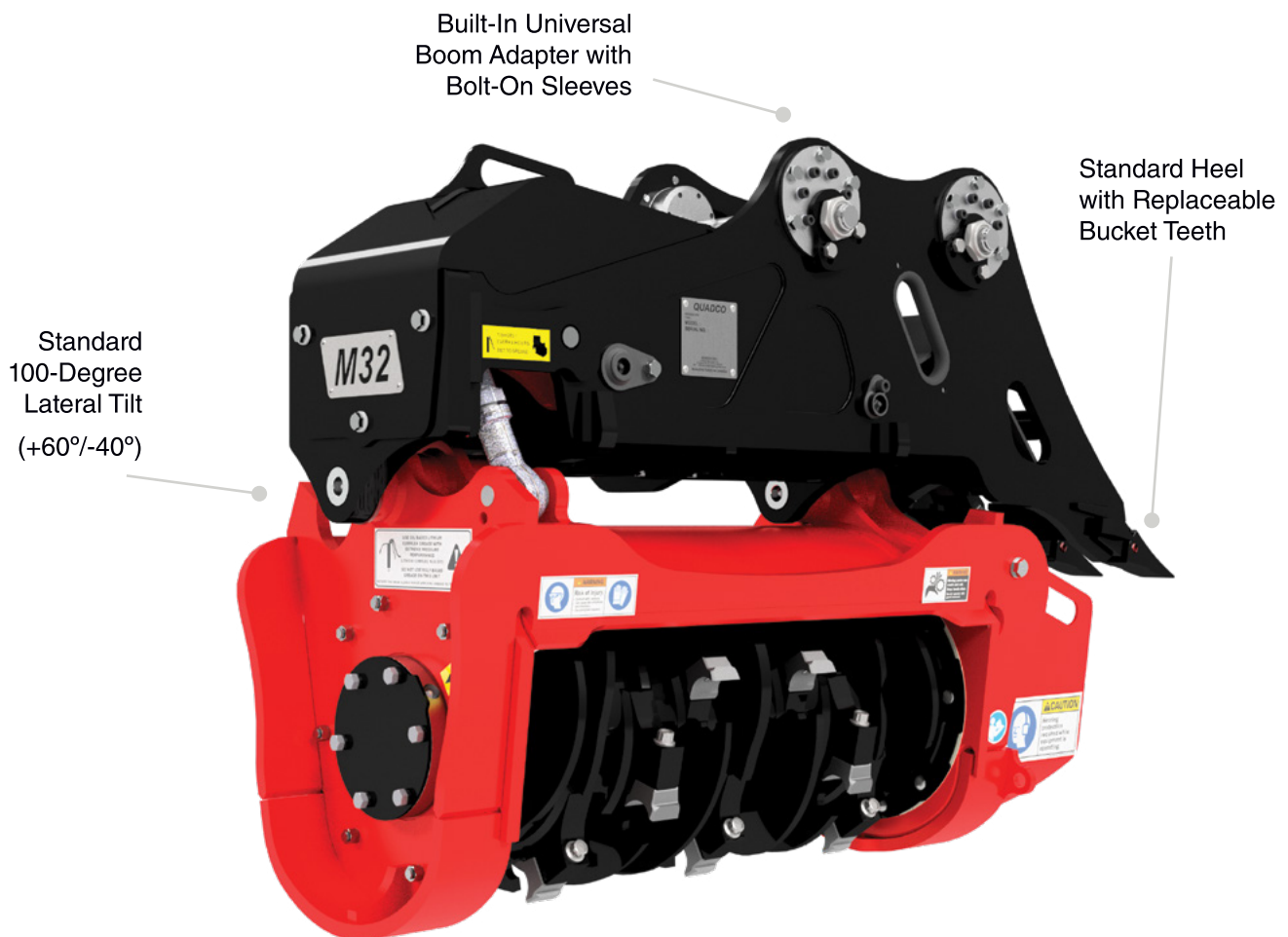


Quadco's 32-inch drum mulcher is part of a lineup of tough, reliable, and cost-efficient forestry mulching attachments. It is a versatile head, compact but heavy duty, best suited to 8- 15 ton excavators. To improve productivity and handling of ground material, a 100-degree lateral tilt is offered as standard equipment as well as a fixed heel equipped with replaceable bucket teeth. The drum is available with a variety of Quadco teeth, all-steel or carbide, to suit any application. Built-in universal boom adapter provides equipment dealers, particularly rental fleets, flexibility, and quick turn arounds to meet the demands of their client's businesses - pins and sleeves only can be swapped when a change of carriers is required.



STANDARD CONFIGURATION

METRIC

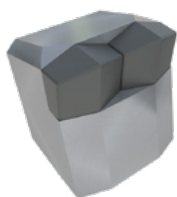
IMPERIAL

WEIGHT & DIMENSIONS	Weight (<i>Incl lateral tilt, heel, typical bolt-on sleeves & pins</i>)	770 kg	1,700 lbs
	Overall Height	1,041 mm	41"
	Width	610 mm	24.5"
	Length	1,499 mm	59"
	Lateral Tilt Angle	100° (+60°/-40°)	

DRUM	Cutting Swath	813 mm	32"
	Drum Diameter, Tip-to-Tip	457 mm	18"
	Number of Teeth	18	
	Drum Speed	2,800 rpm	

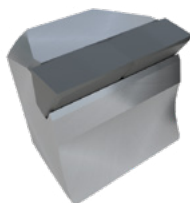
HYDRAULICS	Recommended Carrier Size	8 - 15 ton	
	Variable Displacement Motor	70 cc	
	Minimum Flow @ Pressure	65 l/min @ 240 bar	17 gpm @ 3,500 psi
	Optimum Flow @ Pressure	140 l/min @ 240 bar	37 gpm @ 3,500 psi
	Maximum Pressure	340 bar	5,000 psi

QMX10245X



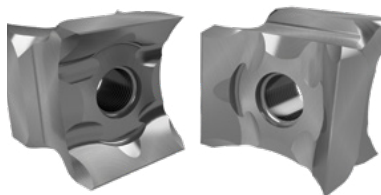
Carbide - Rock
Extreme Impact
High Abrasion

QMX10240X



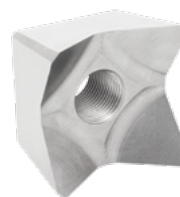
Carbide - Planer
Reduce material size
Medium Impact
High Abrasion

QMX10435T



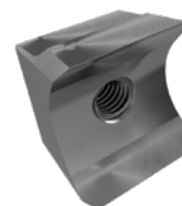
Steel - Planer 4-in-1
Rotatable & Reversible
Sharpenable
Low Abrasion

QH10103T



Steel - Beaver
Rotatable
Viney material
Low Abrasion

QMX10186CT



Steel - Planer
Rotatable
Sharpenable
Low Abrasion