

Quadco is the Pioneer & Leader in the Industry for over 30 years. Many copy but none can match the Quality & Performance of Quadco Cutting Tools.

Scan one of the contacts below to get in touch with a member of our Cutting Tools team!



Dan Webb



Gary Gorscak



Keith Hicks



Chris Dorman

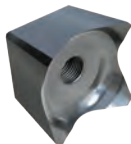
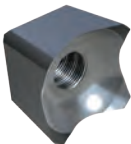
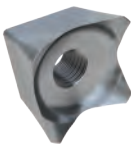


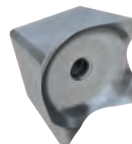
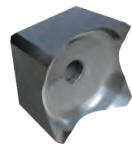


Slavo Birka



ADVANTAGE SERIES SAW TEETH

New Tooth Technology to Reduce Your Operating Cost | Greater Impact Durability in Low Abrasion Conditions

| QRX103R2 | QRX233R2 | QRX333R2 | QRX150R2 | QRX24R2 | QRX96R2 | QRX31R2 |
|--|---|---|---|---|---|---|
|  |  |  |  |  |  |  |
| Interchange with QH10103T | Interchange with Q10233T | Interchange with Q11333T | Interchange with QH10150T | Interchange with QK10024T | Interchange with QH10096T | Interchange with QK100031T |
| PART NO. | DESCRIPTION | | KERF | SHANK LENGTH | SHANK DIAMETER | BOLT SIZE |
| NO-SHANK | | | | | | |
| QRX103R2 | QRX Tooth No-Shank | | 2" | N/A | N/A | 3/4" NF |
| QRX233R2 | QRX Tooth No-Shank | | 2 5/16" | N/A | N/A | 1" NF |
| QRX333R2 | Beaver Tooth No-Shank | | 2 7/16" | N/A | N/A | 1" NF |
| ONE-PIECE | | | | | | |
| QRX150R2 | QRX ToothLong Shank | | 2" | 1 1/2" | 1" | 1/2" NF |
| QRX24R2 | QRX ToothLong Shank | | 2 3/8" | 2" | 1.234" | 5/8" NF |
| TWO-PIECE <small>Note: Crown Teeth require 1 1/2" longer bolt</small> | | | | | | |
| QRX96R2 | QRX Tooth Crown | | 2" | N/A | N/A | 1/2" NF |
| Shank Option(s) | QH10067T 3/4" Short QH10068T 1 1/2" Long | | | | | |
| QRX31R2 | QRX Tooth Crown | | 2 3/8" | 2" | 1.234" | 5/8" NF |
| Shank Option(s) | QK10023T 2" Long | | | | | |

QUADCO MAKES A FULL LINE OF SAW DISC ASSEMBLIES INCLUDING HEAVY DUTY, REVERSIBLE, STANDARD, AND WIDE & NARROW KERF TO FIT ANY SAW HEAD. CALL WITH YOUR SAW DISC SPECIFICATIONS TO MATCH ONE-PIECE OR SEGMENTED DISC COMPONENTS!

SAW DISCS

ONE-PIECE DISCS

DEEP GULLET DISC

- Deep Gullet design (*patented*) provides larger chip pockets reducing plugging and increasing cutting efficiency
- Deep pocket design allows chips to flow away from the tooth with less resistance, reducing component wear, and lowering operating costs
- Optimum tooth mounting angle reduces tooth loading, increasing disc strength and life
- Flange Plate built into the disc
- Two-Year/4,000-Hour Warranty Pro-Rated



STANDARD ONE-PIECE DISC

- Optimum tooth mounting angle reduces load per tooth while promoting maximum disc and tooth life
- Two-Year/4,000-Hour Warranty Pro-Rated



SEGMENTED DISCS

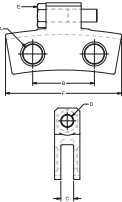
TWO-LEG FULL COVER | REVERSIBLE HOLDER

Symmetrical holder design allows for numerous capabilities, including the ability to easily repair impact or wear damage by rotating the holder 180°



Use Sleeves For Corresponding Holder Dim A

| SIZE | SLEEVES |
|--------|-------------------|
| 1 1/2" | Q10014 & Q10015 |
| 1 1/4" | QH10197 & QH10198 |
| 1" | QH10015 & QH10016 |



Tooth Holder Guide

| HOLDER | DIM A | DIM B | DIM C | DIM D | DIM E | DIM F |
|---------|--------|--------|-------|-------|-------|--------|
| Q10165 | 1" | 3 1/2" | 7/8" | 3/4" | 3/4" | 7.47" |
| QH10248 | 1 1/4" | 3 1/2" | 7/8" | 3/4" | 3/4" | 7.087" |
| QH10234 | 1 1/4" | 3 1/2" | 7/8" | 3/4" | 3/4" | 7.517" |
| Q10176 | 1 1/2" | 4.827" | 1" | 1" | 1" | 10.22" |
| Q10330 | 1 1/2" | 4.827" | 1" | 1" | 1" | 9.728" |
| Q10899 | 1 1/2" | 4.827" | 1" | 1" | 1" | 9.142" |

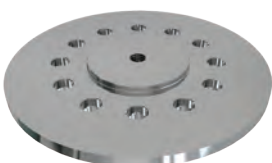
DISC COMPONENT OPTIONS

DISC HOLDER ASSEMBLY



Shown with 2-Piece Tooth

FLANGE PLATES



Unique "disc clamping" design

REVERSIBLE TOOTH HOLDER



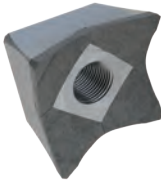
- Fully symmetrical so the tooth can be mounted on either side, allowing the holder to be reversed
- Available to fit shank and no-shank tooth types
- Doubles the life of the holder
- Lowers operating costs

QUADCO
CUTTING TOOLS

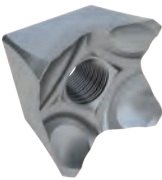


Introducing New
QP Series Teeth Saw Teeth

QPX4NB



QP33



QP24K



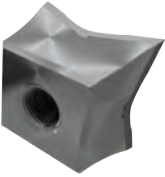
Your Ultimate Source for
Forestry Cutting Tools & Attachments

Quad Tooth® System | Demand Genuine Quadco

SAW TOOTH
CUTTING TOOL GUIDE

INDUSTRY LEADING CUTTING PERFORMANCE & LIFE

- **New** Durable Carbide Grade to match cutting application
- **More Carbide & Steel** where it counts
- **Longer** wear life hours
- **Lower** operating costs
- **Larger Kerf = More Clearance** to Butt Plate and Saw Disc
- **Quadco Patented “Flare” Design** reduces tooth drag
- **Improved Quadco Patented Carbide Tip** overlap eliminates blowby wear



NEW QPS SERIES SAW TEETH



| PART NO. | DESCRIPTION | KERF (NOMINAL SIZE) | SHANK LENGTH | SHANK DIAMETER | BOLT SIZE |
|-----------------|--|------------------------|--------------|----------------|-----------|
| NO-SHANK | | | | | |
| QP03H | Performance Tooth No-Shank | 2 1/16" | N/A | N/A | 3/4" NF |
| QP23 | Performance Tooth No-Shank | 2 3/8" | N/A | N/A | 1" NF |
| QP33 | Performance Tooth No-Shank | 2 1/2" | N/A | N/A | 1" NF |
| QPX4HNB | Performance Tooth Carbide Beaver | 2" | N/A | N/A | 3/4" NF |
| QPX4HNS | Performance Tooth Carbide Sharp | 2" | N/A | N/A | 3/4" NF |
| QPX4NBD | Performance Tooth Carbide Beaver Durable | 2 3/8" | N/A | N/A | 1" NF |
| QPX4NB | Performance Carbide Beaver | 2 3/8" | N/A | N/A | 1" NF |
| QPX4NS | Performance Carbide Sharp | 2 3/8" | N/A | N/A | 1" NF |
| QPX4KNB | Performance Tooth Carbide Beaver | 2 1/2" | N/A | N/A | 1" NF |
| QPX4KNS | Performance Tooth Carbide Sharp | 2" | N/A | N/A | 1" NF |
| QPX4KNBD | Performance Tooth Carbide Beaver Durable | 2 1/2" | N/A | N/A | 1" NF |
| ONE-PIECE | | | | | |
| QP97 | Performance Tooth Short Shank | 1 3/4" | 0.100" | 1" | 1/2" NF |
| QP50H | Performance Tooth Long Shank | 2 1/16" | 1 1/2" | 1" | 1/2" NF |
| QPX4HB | Performance Tooth Carbide Beaver | 2" | 1 1/2" | 1" | 1/2" NF |
| QPX4HBD | Performance Tooth Carbide Durable | 2" | 1 1/2" | 1" | 1/2" NF |
| QPX4HS | Performance Tooth Carbide Sharp | 2" | 1 1/2" | 1" | 1/2" NF |
| QP24K | Performance Tooth Long Shank | 2 1/2" | 2" | 1.234" | 5/8" NF |
| QPX4KB | Performance Tooth Carbide Long Shank | 2 1/2" | 2" | 1.234" | 5/8" NF |
| QPX4KBD | Performance Tooth Carbide Beaver Durable | 2 1/2" | 2" | 1.234" | 5/8" NF |
| QPX4KS | Beaver Tooth Carbide Long Shank Sharp | 2 1/2" | 2" | 1.234" | 5/8" NF |
| TWO-PIECE | | | | | |
| QP96HC | Performance Tooth Crown | 2 1/16" | N/A | N/A | 1/2" NF |
| Shank Option(s) | QH10067T 3/4" Short QH10068T 1 1/2" Long | | | | |
| QP31KC | Performance Tooth Crown | 2 1/2" | N/A | N/A | 5/8" NF |
| Shank Option(s) | QK10023T 2" Long | | | | |
| QPX4KCB | Performance Tooth Carbide Beaver Crown | 2 1/2" | N/A | N/A | 5/8" NF |
| Shank Option(s) | QK10023T 2" Long | | | | |

LEGACY SERIES

| | |
|------------|--|
| Q10233T | |
| QK10024T | |
| QVK4X4B-G1 | |
| QK10031T | |

| PART NO. | DESCRIPTION | KERF | SHANK LENGTH | SHANK DIAMETER | BOLT SIZE |
|---|---|---------|--------------|----------------|-----------|
| NO-SHANK CONCAVE | | | | | |
| QH10110T | Concave Tooth No-Shank | 2" | N/A | N/A | 3/4" NF |
| Q10205T | Concave Tooth No-Shank | 2 1/4" | N/A | N/A | 1" NF |
| NO-SHANK BEAVER | | | | | |
| QH10103T | Beaver Tooth No-Shank | 2" | N/A | N/A | 3/4" NF |
| Q10233T | Beaver Tooth No-Shank | 2 5/16" | N/A | N/A | 1" NF |
| Q11333T | Beaver Tooth No-Shank | 2 7/16" | N/A | N/A | 1" NF |
| NO-SHANK CARBIDE | | | | | |
| QVH4X4NSB-G1 | Beaver Tip Tooth No-Shank | 1 7/8" | N/A | N/A | 3/4" NF |
| QV4X4NS-G1 | Sharp Tip Tooth No-Shank | 2 1/4" | N/A | N/A | 1" NF |
| QV4X4NSB-G1 | Beaver Tip Tooth No-Shank | 2 1/4" | N/A | N/A | 1" NF |
| QV4X4NR-11C | Durable Tip Tooth No-Shank | 2 1/4" | N/A | N/A | 1" NF |
| QV4X4NSBK-G1 | Beaver Tip Tooth No-Shank Wide Kerf | 2 3/8" | N/A | N/A | 1" NF |
| ONE-PIECE CONCAVE | | | | | |
| QK10012T | Concave Tooth Short Shank | 1 1/8" | 0.38" | 0.62" | N/A |
| QMX10015T | Concave Tooth Short Shank | 1 1/8" | 0.38" | 0.62" | 3/8" NC |
| Q10121T | Concave Tooth Short Shank | 1 1/8" | 1" | 1" | 3/8" NC |
| QH10062T | Concave Tooth Short Shank | 2" | 1 1/2" | 1" | 1/2" NF |
| QH100091T | Concave Tooth Short Shank | 1 7/8" | 1 3/4" | 1" | 1/2" NF |
| Q10001T | Concave Tooth Short Shank | 2 1/4" | 0.938" | 1 1/4" | 1/2" NF |
| Q10097T | Concave Tooth Short Shank | 2 7/32" | 2" | 1 1/4" | 1/2" NF |
| Q10098T | Concave Tooth Short Shank | 2 1/4" | 2" | 1 1/4" | 5/8" NF |
| M1K404T | Concave Tooth Short Shank | 2 5/16" | 2" | 1.234" | 5/8" NF |
| ONE-PIECE BEAVER | | | | | |
| QK10061T | Beaver Tooth Short Shank | 1 1/8" | 0.38" | 0.621" | 3/8" SHCS |
| QMX10020T | Beaver Tooth Short Shank | 1 1/8" | 0.375" | 0.621" | 3/8" NC |
| QH10150T | Beaver Tooth Short Shank | 2" | 1 1/2" | 1" | 1/2" NF |
| QH10078T | Beaver Tooth Short Shank | 2" | 3/4" | 1" | 1/2" NF |
| QH10098T | Beaver Tooth Short Shank | 2 1/8" | 1 1/2" | N/A | 1/2" NF |
| Q10214T | Beaver Tooth Short Shank | 1 5/8" | 0.1" | 1" | 5/8" NF |
| Q10797T | Beaver Tooth Short Shank | 2 1/4" | 0.1" | 1" | 1/2" NF |
| Q10797EXT | Beaver Tooth Short Shank | 1 7/8" | 0.1" | 1" | 1/2" NF |
| Q10635T | Beaver Tooth Short Shank | 1 3/4" | 0.1" | 1" | 3/8" NC |
| Q10206T | Beaver Tooth Short Shank | 1 5/8" | 0.1" | 1" | 3/8" NC |
| Q10150T | Beaver Tooth Short Shank | 2 1/4" | 0.938" | 1 1/4" | 1/2" NF |
| Q10122T | Beaver Tooth Long Shank | 2 1/4" | 2" | 1 1/4" | 1/2" NF |
| QK10024T | Beaver Tooth Long Shank | 2 3/8" | 2" | 1.234" | 5/8" NF |
| ONE-PIECE CARBIDE | | | | | |
| QVH4X4-1B-G1 | Beaver Tip Tooth | 1 7/8" | 1 1/2" | 1" | 1/2" NF |
| QV4X4B-G1 | Beaver Tip Tooth | 2 1/4" | 0.938" | 1 1/4" | 1/2" NF |
| QVK4X4B-G1 | Beaver Tip Tooth; Wide Kerf | 2 1/4" | 0.938" | 1.249" | 5/8" NF |
| QVK4X4B-11C | Beaver Tip Tooth Durable Carbide; Wide Kerf | 2 1/4" | 0.938" | 1.249" | 5/8" NF |
| QVH4X4-1B-11C | Beaver Tip Tooth Durable Carbide | 1 7/8" | 1 1/2" | 1" | 1/2" NF |
| TWO-PIECE CONCAVE <small>Note: Crown Teeth require 1 1/2" longer bolt</small> | | | | | |
| QH10120T | Concave Tooth Crown | 2" | N/A | N/A | 1/2" NF |
| Shank Option(s) | QH10067T 3/4" Short QH10068T 1 1/2" Long | | | | |
| Q10105T | Concave Tooth Crown | 2 1/4" | N/A | N/A | 1/2" NF |
| Shank Option(s) | Q10106T 0.938" Short: Q10117T 2" Long | | | | |
| QK10022T | Concave Tooth Crown | 2 3/8" | N/A | N/A | 5/8" NF |
| Shank Option(s) | QK10023T 2" Long | | | | |
| M1M203T | Concave Tooth Crown | 2" | N/A | N/A | 5/8" NC |
| Holder Option(s) | M1HBF200 2 1/2" Long | | | | |
| M1M205T | Concave Tooth Crown | 2 5/16" | N/A | N/A | 3/4" NC |
| Holder Option(s) | M1HBF2516 3 1/4" Long | | | | |
| TWO-PIECE BEAVER <small>Note: Crown Teeth require 1 1/2" longer bolt</small> | | | | | |
| QH10096T | Beaver Tooth Crown | 2" | N/A | N/A | 1/2" NF |
| Shank Option(s) | QH10067T 3/4" Short QH10068T 1 1/2" Long | | | | |
| Q10094T | Beaver Tooth Crown Cross-Back | 2 1/4" | .505" | N/A | 1/2" NF |
| Shank Option(s) | Q10093T 0.938" Short | | | | |
| Q10136T | Beaver Tooth Crown | 2 1/4" | N/A | N/A | 1/2" NF |
| Shank Option(s) | Q10096T 0.938" Short Q10117T 2" Long | | | | |
| QK10031T | Beaver Tooth Crown | 2 3/8" | N/A | N/A | 5/8" NC |
| Shank Option(s) | QK10023T 2" Long | | | | |
| M1M233T | Beaver Tooth Crown | 2" | N/A | N/A | 5/8" NF |
| Holder Option(s) | M1HBF200 2 1/2" Long | | | | |
| TWO-PIECE CARBIDE <small>Note: Crown Teeth require 1 1/2" longer bolt</small> | | | | | |
| QVK4X4CB-G1 | Beaver Tip Tooth Crown; Wide Kerf | 2 3/8" | N/A | N/A | 5/8" NF |
| Shank Option(s) | QK10023T 2" Long | | | | |