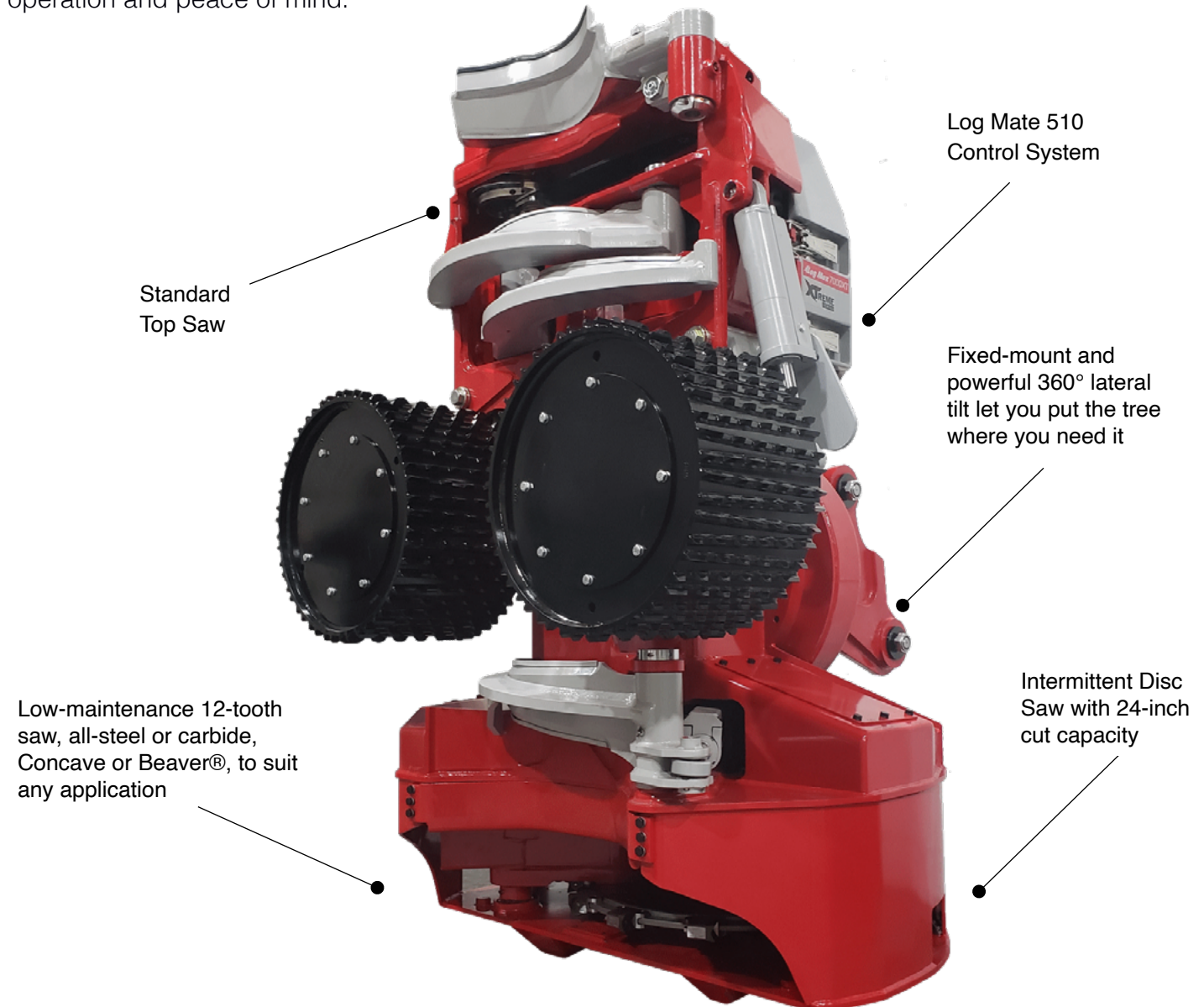


7000XTDS 'PRELIMINARY'

Log Max's new 22-inch class harvester head is the result of collaborative efforts by Log Max and Quadco. We have taken the popular 7000XT and replaced the bottom saw with a Quadco Intermittent Disc Saw to reduce downtime and costs associated with chain saws. The swing-out disc saw is made of a solid center and a rotating ring, enabling the saw to instantly develop 600-700 rpm cutting speed. The result is high quality cuts at an impressive rate. This robust head is built for shift after shift production. It quickly cleans out underbrush without throwing chain or bending bars, clearing the way for a close-to-the-ground cut to increase the value of the first log. It is also ideal for delimbing and topping challenging trees. The fixed-mount and new Quadco-designed lateral tilt using two direct drive motors with plenty of torque provide full tree control. Built with field-proven Log Max and Quadco technology, this modern state-of-the-art harvester-processor is designed for professional contractors who are looking for ease of operation and peace of mind.



7000XTDS

STANDARD CONFIGURATION

METRIC

IMPERIAL

WEIGHTS & DIMS.

Weight (Including Lateral Tilt & Typical Boom Adapter)	3,260 kg	7,190 lbs
Overall Height	2,286 mm	90"
Maximum Width (Rolls Open)	1,938 mm	76.3"
Maximum Depth (Arms Open, Including Typical Boom Adapter)	1,968 mm	77.5"
Maximum Tree Diameter (Full Delimbing Coverage)	528 mm	21"
Main Delimb Arms, Tip to Opening	740 mm	29.1"
Maximum Feed Roll Opening	713 mm	28"

SAW UNITS

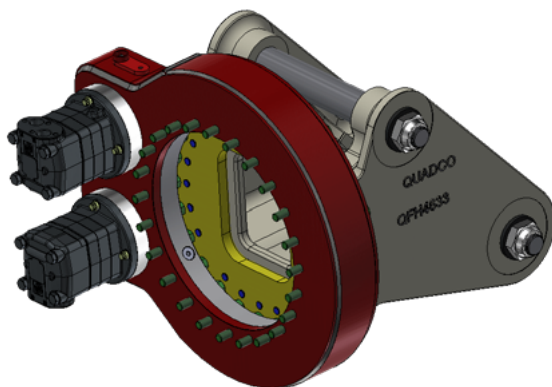
Main Saw, Cutting Capacity	610 mm	24"
Main Saw, Type	Swing-out Segmented Ring Saw	
Main Saw, Teeth	12 x 1-5/8" (41mm) Rotatable Teeth	
Main Saw, Rated Tip Speed	760 rpm	
Top Saw, Cutting Capacity	490 mm	19.3"
Top Saw, Type	0.404", Model 318, Auto-tensioning	

FEEDING

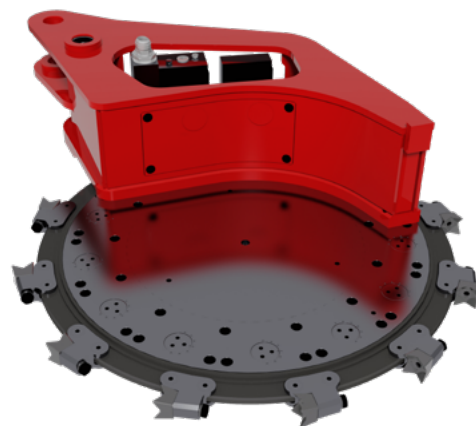
880 - 1,320 cc std. Feed Motors, Theoretical Force	45.0 kN	10,100 lbf
880 - 1,320 cc std. Feed Motors, Speed	5.2 m/s	17.1ft/s
1,259 cc Optional Feed Motors, Theoretical Force	45.1 kN	9,500 lbf
1,259 cc Optional Feed Motors, Speed	4.2 m/s	13.8ft/s

HYDRAULICS

Min-Max Hydraulic Flow	250-350 l/min	66-92 gpm
Min-Max Hydraulic Pressure	250-320 bar	3,600-4,650 psi
Lateral Tilt, Motors	2x OMVS 800 cc Motors, Single Reduction	
Lateral Tilt, Speed	4.7 rpm @ 56 gpm	3,600-4,650 psi
Lateral Tilt, Torque	34,000 Nm @207 bar	25,000 lb-ft @ 3,000 psi



New Quadco-Designed Lateral Tilt



Intermittent Swing-Out Ring Saw