

QUADCO

Distributor of



A lightweight and effective hydraulic rotator with unlimited rotation for forestry, construction, agricultural loaders and more.



ROTATORS



SPECIFICATIONS

	1 Ton	3 Ton	4 Ton	5 Ton
Capacity	1 Ton	3 Ton	4 Ton	5 Ton
Rotation Angle	Unlimited	Unlimited	Unlimited	Unlimited
Max Pressure (R)	250bar(3625psi)	250bar(3625psi)	250bar(3625psi)	250bar(3625psi)
Max Pressure (GO)	200bar(2900psi)	200bar(2900psi)	200bar(2900psi)	200bar(2900psi)
Max Pressure (GC)	300bar(4350psi)	300bar(4350psi)	300bar(4350psi)	300bar(4350psi)
Required Oil Flow	10 l/min(2642g/m)	20 l/min(5284g/m)	20 l/min(5284g/m)	20 l/min(5284g/m)
Displacement	139 cm3(11.58in3)	330 cm3(19.8in3)	420 cm3(25.2in3)	465 cm3(27.9in3)
Torque	450 Nm(332lbf-in)	900 Nm(664lbf-in)	1100 Nm(811lbf-in)	1400 Nm(1033lbf-in)
Max Axial Load				
Static	10kN(2248lbf)	30kN(6744lbf)	40kN(8992lbf)	55kN(12365lbf)
Dynamic	5kN(1124lbf)	15kN(3372lbf)	20kN(4496lbf)	25kN(5620lbf)
Weight	10kg(22lbs)	17kg(37.4lbs)	23kg(50.6lbs)	28kg(61.6lbs)
(310/410 only)	-	16kg(35.2lbs)	22kg(48.4lbs)	-
w-model (300F-500F)	-	22kg(48.4lbs)	28kg(61.6lbs)	33kg(61.6lbs)
Connections (Top)	-	G3/8in	G3/8in	G3/8in
(Bottom)	-	G1/4in	G3/8in	G3/8in

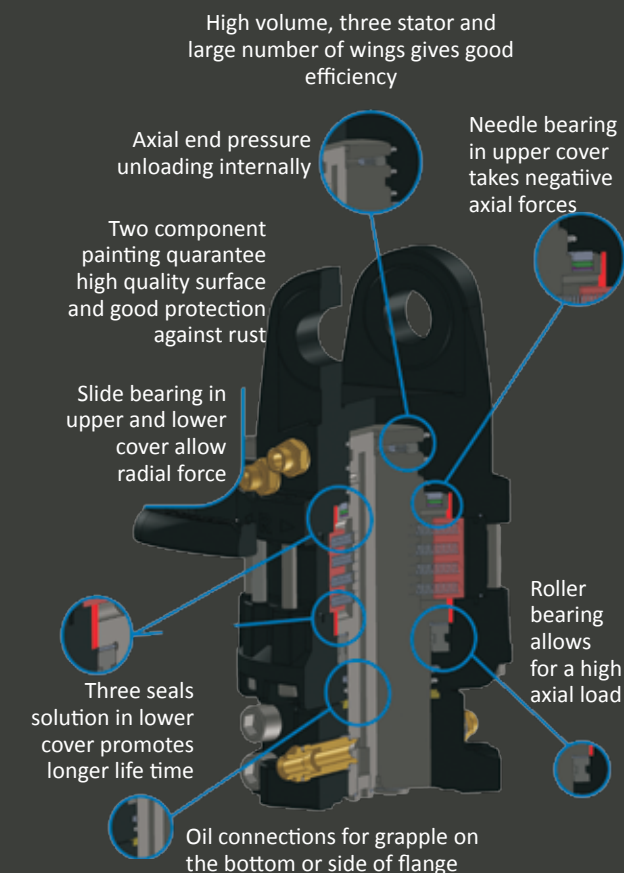
DIMENSIONS - refer to drawings on opposite side

	CR100A		CR300A		CR310A		CR320A		CR300F		CR400A		CR410A		CR400F		CR500A		CR500F	
	mm	in	mm	in	mm	in	mm	in	mm	in	mm	in	mm	in	mm	in	mm	in	mm	in
A	238.5	9.390	277.5	10.925	285	11.220	285	11.220	232	9.134	301	11.850	317	12.480	246	9.665	311	12.244	273	10.748
B	25	0.984	25	.984	25	0.984	25	0.984	25	0.984	25	0.984	25	0.984	25	0.984	30	1.181	30	1.181
C	39.5	1.555	49.5	1.949	49.5	1.949	49.5	1.949	234	9.213	59	2.323	59	2.323	241	9.488	69	2.717	234	10.472
D	194	7.638	239	9.409	240	9.449	239	9.409	60	2.362	240	9.449	258	10.157	73	2.874	266	10.472	73	2.874
E	45	1.772	60	2.362	60	2.362	60	2.362	158	6.220	73	2.874	73	2.874	172	6.772	73	2.874	184	7.244
F	137	5.394	158	6.220	158	6.220	158	6.220	46	1.811	172	6.772	172	6.772	46	1.811	184	7.244	67	2.638
G	59	2.323	75	2.953	75	2.923	75	2.953	30	.181	84	3.307	84	3.307	30	1.181	91.5	3.602	33	1.299
H	19	0.748	22.5	0.886	22.5	0.886	22.5	0.886	267	10.512	28	1.102	28	1.102	286	11.26	32	1.260	313	12.323
I	20	0.787	25	0.984	25	0.984	25	0.984	-	-	30	1.181	30	1.181	-	-	30	1.181	-	-
J	268.5	10.571	312.5	12.303	316	12.441	316	12.441	-	-	341	13.425	347	13.661	-	-	351	13.819	-	-

FORESTRY ROTATORS

At QUADCO, we proudly distribute Finn-Rotators to compliment the productivity of our products.

FEATURES, ADVANTAGES, BENEFITS



Check out our Facebook page for more info and promotions. www.facebook.com/quadco

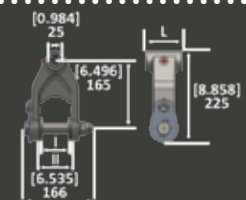


QUADCO

800.668.3340 www.quadco.com

QUADCO sets the standard in forestry teeth and attachments and is a pioneer in the industry. Contact us for more information on these and our other products.

ACCESSORIES



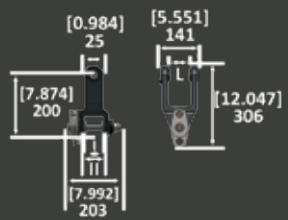
CL Link

P/N	mm	inches	Applications
CL 7325	60-90	2.362-3.543	I - CR 300 II - CR 400



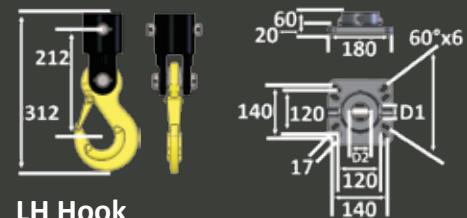
CBL Link - Single braking link

P/N	mm	inches	Applications
CBL 7325	60-90	2.362-3.543	I - CR 300 II - CR 400/500



CBHL Link - Single braking link - H type

P/N	mm	inches	Applications
CBHL 7325	60-90	2.362-3.543	I - CR 300 II - CR 400



Applications	D & D1	D2
CR 300	25	49
CR 400	30	59
CR 500	30	69

LH Hook
Lifting Hook-D BM Flange D1 & D2

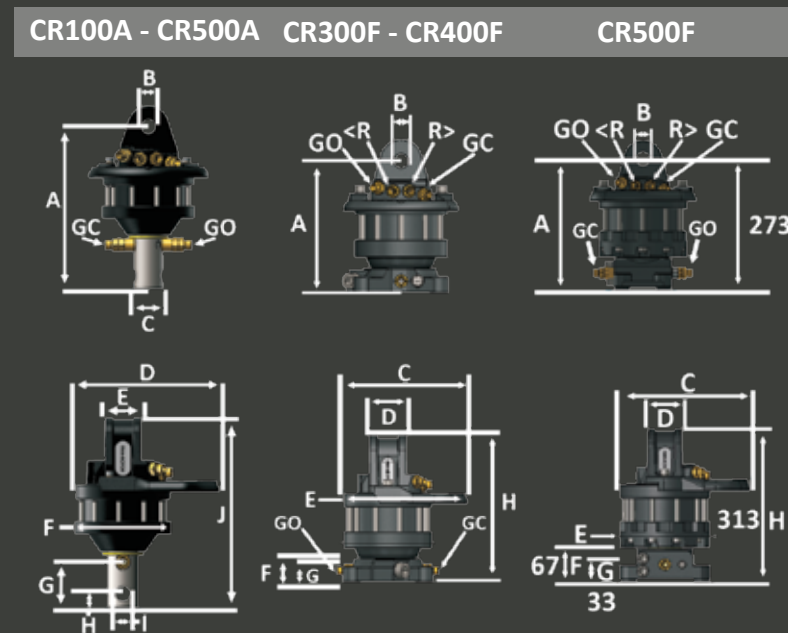
ROTATORS



SPECIFICATIONS

Capacity	6 Ton	8 Ton	10 Ton	12 Ton
Rotation Angle	Unlimited	Unlimited	Unlimited	Unlimited
Max Pressure (R)	250bar(3625psi)	250bar(3625psi)	250bar(3625psi)	250bar(3625psi)
Max Pressure (GO)	200bar(2900psi)	300bar(4350psi)	300bar(4350psi)	300bar(4350psi)
Max Pressure (GC)	300bar(4350psi)	300bar(4350psi)	300bar(4350psi)	300bar(4350psi)
Required Oil Flow	25 l/min(7g/m)	20 l/min(5284g/m)	20 l/min(5284g/m)	20 l/min(5284g/m)
Displacement	465 cm3(27.9in3)	670 cm3(40.2in3)	420 cm3(25.2in3)	465 cm3(27.9in3)
Torque	1800 Nm(1328lbf-in)	2000 Nm(1475lbf-in)	1100 Nm(811lbf-in)	1400 Nm(1033lbf-in)
Max Axial Load				
Static	60kN(13487lbf)	80kN(17985lbf) -40kN(-8992lbf)	100kN(22481lbf) -80kN(-17985lbf)	120kN(26977lbf) -90kN(-20233lbf)
Dynamic	30kN(6744lbf)	40kN(8992lbf) -20kN(-4496lbf)	50kN(11241lbf) -40kN(-8992lbf)	60kN(13489lbf) -45kN(-10116lbf)
Weight				
w-model	48kg(106lbs)	51kg(112.2lbs)	64kg(140.8lbs)	76kg(167.2lbs)
x-model	50kg(110lbs)	54kg(118.8lbs)	67kg(147.4lbs)	79kg(173.9lbs)
Connections	G1/2in	G1/2in	G1/2in	G1/2in

DIMENSIONS - refer to drawings at right

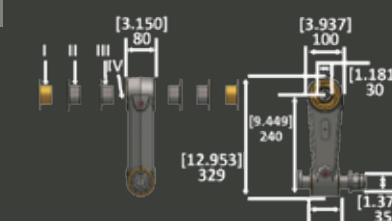


	CR100A - CR500A		CR300F - CR400F		CR500F		CR600F, CR600FX, CR600FW		CR800H		CR1000H		CR1200H	
	mm	in	mm	in	mm	in	mm	in	mm	in	mm	in	mm	in
A	308	12.126	308	12.126	350.5	13.799	382.5	15.059						
B	35	1.378	35	1.378	35	1.378	45	1.772						
C	400	15.748	298	11.721	314	12.362	324	12.756						
D	130.5	5.138	130.5	5.138	130.5	5.138	170	6.693						
E	80.5	3.169	80.5	3.169	80.5	3.169	100.5	3.957						
F	62.5	2.461	62.5	2.461	62.5	2.461	77.5	3.051						
G	198	7.795	198	7.795	214	8.425	224	8.811						
H	77	3.031	77	3.03	79	3.110	83	3.268						
I	30	1.181	30	1.181	30	1.181	35	1.378						
J	353	13.898	353	13.898	395.5	15.571	437.5	17.224						
K	87	3.425	87	3.425	87	3.425	113	4.449						

Meaning of letters used:

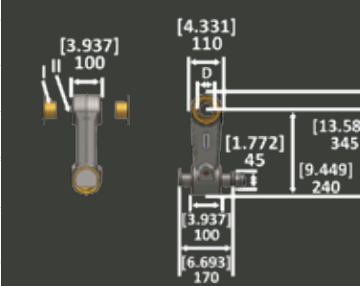
C = Link series name and compatibility L = O-type link CL = Without Brake GO = Grapple Open R> = Rotate - Clockwise
 B = Single Braking Link DB = Double Brake HL = H-type Link GC = Grapple Closed R< = Rotate - Counter Clockwise

ACCESSORIES



CL 80 Link

P/N	mm(in)	Applications
CL 8035 I	30 (1.181)	CR600, CR800H, CR1000H
CL8035 II	35 (1.378)	CR600, CR800H, CR1000H
CL 8035 III	40 (1.575)	CR600, CR800H, CR1000H
CL 8035 VI	45 (1.772)	CR600, CR800H, CR1000H



CL 100 Link

P/N	D mm(in)	Applications
CL 10045 I	45 (1.772)	CR600, CR800H, CR1000H, CR1200H
CL 10045 II	50 (1.969)	CR600, CR800H, CR1000H, CR1200H

Sliding bearings for every moving surface.



DBL Link- Double braking link

DBL Link is a dual direction braking link for professional use. Available for all boom heads and CR rotators.

Welded boom head also available.

